



Key Plan

#### PROPOSED TREES TO BE RETAINED

Very Low Value	1
Low Value	11
Moderate Value	28
High Value	40
<b>TOTAL</b>	<b>79</b>

#### PROPOSED TREES TO BE REMOVED

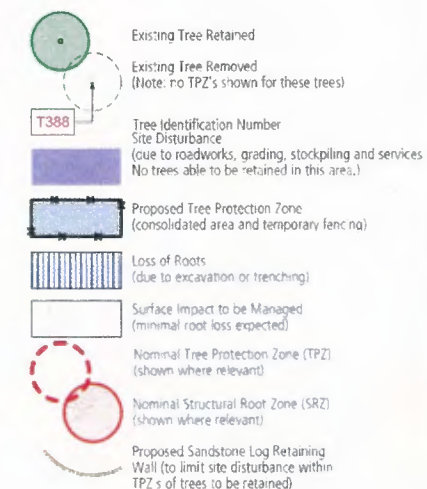
Very Low Value	16
Low Value	128
Moderate Value	59
High Value	11
<b>TOTAL</b>	<b>214</b>

#### CONDITION / RETENTION VALUE ANALYSIS

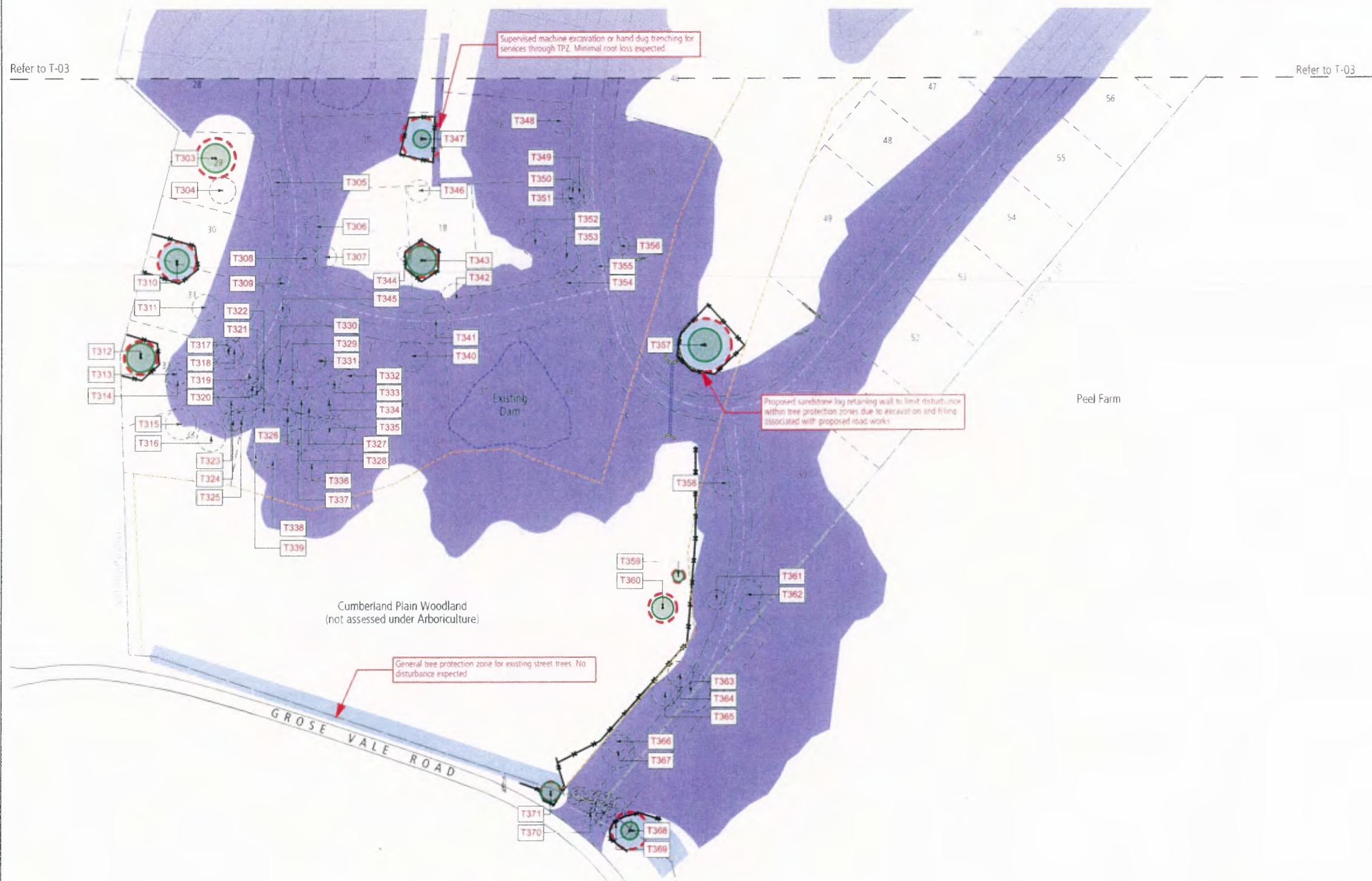
Very Low Value	16 ( 5.5%)
Low Value	139 (47.4%)
Moderate Value	87 (29.7%)
High Value	51 (17.4%)
<b>TOTAL</b>	<b>293</b>

**NOTE**  
Some trees and their positions were not surveyed and have been interpolated from aerial photos and field observations by Arterra. Arterra recommend obtaining updated survey prior to any final design and construction.

#### LEGEND



- NOTES**
1. Refer to the accompanying Arboricultural Impact Assessment Report for full description of trees, measurements and methods used to assess the trees. Also provides details of proposed tree protection measures.
  2. All trees outside of the extent of works shall be retained and protected. Seek advice from the nominated, superintendent and/or the Consulting Arborist for all works or access requirements that may impact on trees outside of the extent of works illustrated on this plan.



ARTERRA DESIGN PTY LTD ABN 40 069 552 610  
SUITE 602 51 RAWSON STREET, EPPING NSW 2127  
P 02 9957 2466 F 02 9957 3977 W ARTERRA.COM.AU



0 25 50 100m

1:24  
DATE

Redbank  
DA12 - Belmont Precinct  
NORTH RYDE JOINT VENTURE

Tree Removal & Protection Plan (South)



Project No: 1013  
Client: ARTERRA  
Date: 11/06/2014  
Scale: 1:2000 (DA12 - BELMONT)  
Author: [Signature]  
Check: [Signature]  
T-04 A



